

# WEST PANORAMA RIDGE

## RATEPAYERS ASSOCIATION

### “To Preserve the Semi-Rural Nature of the Ridge”

A Registered Non-Profit Society Serving the Community of Panorama Ridge in Surrey, BC

#### FALL 2018

##### INSIDE

NEPP update	2
Colebrook Elementary 100 Years	3
Panorama Riding Club	3
Colebrook Church	4
Thank you to our Advertisers	5
In the Community	6
Presidents Message	7
Join the WPRRA	8
City of Surrey	8

#### In the Community

##### DREADED TRAIN WHISTLING RETURNS...for a short while!

As some of you may have noticed, the train whistling started back up again in late January at the Colebrook/127A crossing. This was due to a “failure of the detection loop in the asphalt”. This controls the secondary exit gate arm on the north side of the BRC/BNSF crossing and was likely caused by winter weather ground frost. As frost did not dissipate until mid March, ( before we went directly to almost summer weather), the repairs did not take place until early April.

Periodically you may hear “phantom” whistling as some engineers did not get the memo or do not read the No Whistling signs, but we are thankful for our uninterrupted sleeps!

For those of you newcomers to the Ridge, we did at one time have 13 un-controlled crossings below and with the increase in train traffic over the years, the whistling would have been deafening! We are grateful to Bob Campbell for his dedication to cease whistling world wide...maybe that's why he likes small islands with no train tracks!

We are also appreciative to Arnie Van Hattem for his railroad connections and when you deal with large corporations, it is good to have an “in”!



Mark Your Calendar  
for  
**10th Annual RIDGE DAY!**  
**September 14, 2019**

Colebrook United Church  
Parking Lot

Everyone Welcome

##### QUESTION OF THE DAY (as seen in The Peace Arch News):

Is a campaign promise sufficient to qualify as public consultation on policing?

We'd love to know your thoughts and if you're prepared to pay whatever it takes to have a Municipal Police Force?

Email: [panoramaridge@shaw.ca](mailto:panoramaridge@shaw.ca)

[www.PanoramaRidge.org](http://www.PanoramaRidge.org)

# West Panorama Ridge Neighbourhood Emergency Preparedness Plan Neighbours Supporting Each Other

## NEPP Update by Diane Dent

Since publishing the update in the Fall 2018 Newsletter, we have continued to make progress with the Neighbourhood Emergency Preparedness Plans.

We have formed a **Communications & Transportation Team** with involvement from two Ridge residents who are Amateur Radio Operators with great knowledge and connections within this area. We've met three times and made good progress with determining what the approach will be. The objectives are to ensure that residents have the ability during an emergency to:

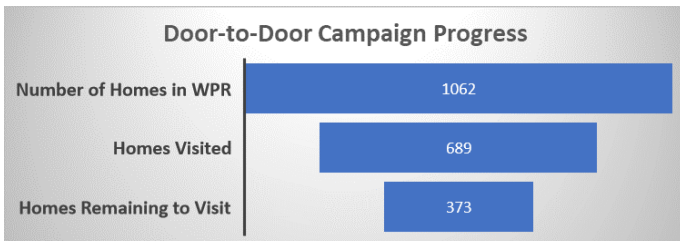
- Communicate locally for self help
- Communicate outside the area to summon resources or rescue

The assumption is that, during an emergency, conventional or commercial means of communication will not be available, including land line, cell phones, internet and power. We have been evaluating options and we are getting closer to determining what the best options are.

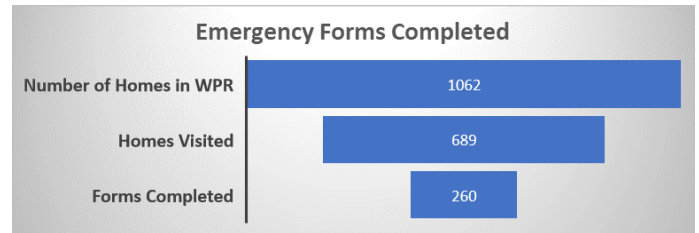
### Update on the Door-to-Door Campaign

Emergency Household Survey forms continue to trickle in. We will re-launch the door-to-door campaign throughout April, May and June, with the goal of having visited every home in West Panorama Ridge by the end of June. At that time, we plan to conduct a pilot with one or two sections where we have received the strongest show of support by way of volunteers. This will allow us to improve and refine the process and resources and roll it out to other sections.

We have 373 homes remaining to visit, with the goal of raising awareness and gathering important information. To learn more or to submit this information online, please visit our website: <http://www.panoramaridge.org/resources/nepp/>



Not every household has filled out the form, which is totally fine. However, it's particularly good to know if there is anyone in the home who may need extra help during an emergency, including elderly family members or pets who might be home alone.



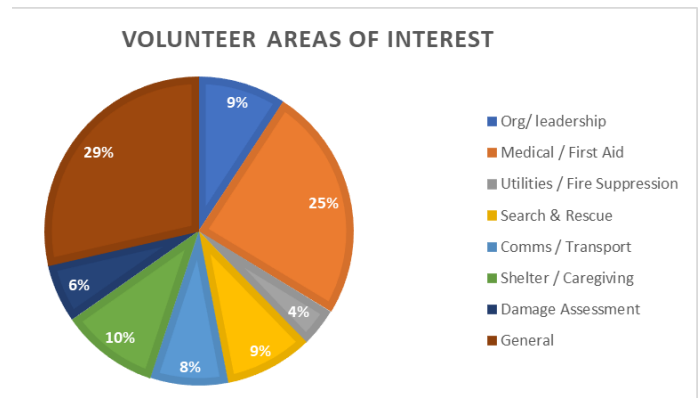
Out of the homes that did complete a form we know that 44 have a need for extra support and 90 of them have pets.

### Volunteer Areas of Interest

**THANK YOU** to the almost 100 individuals who have put up their hand to help during an emergency. This is a good start, but we know that it will take many more good neighbours to really ensure that we are ready. So, please consider how you can get involved – there are loads of options. Refer to the Fall 2018 Newsletter for details. <http://www.panoramaridge.org/wprra-newsletter/>

If you don't wish to complete a household emergency form but you are willing to step up and volunteer, please drop an email to Diane Dent at [dydent@shaw.ca](mailto:dydent@shaw.ca).

There is a good range of interests that have been expressed (see chart below) and we will be in touch with all of you sometime in June to let you know what the next steps will be. We are looking at training opportunities in some areas.



**Personal Emergency Kit** – Last, but not least, if you do not already have a personal emergency kit for your home or car, please make time to do so. We each need to be able to support ourselves and our families for at least 72 hours after an emergency. Out of the 260 homes that did complete a survey, 104 of you indicated that you do have a kit. We have a ways to go!

## Colebrook Elementary Celebrating 100 Years Strong!

Yes, it's true and there are even some old-timers still living on the Ridge who went to Colebrook more than 50 years ago!

In true neighbourhood spirit, the school will be having a Community Picnic ( bring your own basket, if you haven't pre-ordered ) The event is Thursday May 9<sup>th</sup> from 3:30 PM to 5:30 PM.

The school annual Fun Day is Friday May 31 and they are looking for donated items for their Silent Auction fundraiser.

They are also seeking gently used children's books for a new program at the School.

Please contact:

[colebrookpac@live.ca](mailto:colebrookpac@live.ca) for more information.



## Interested in Amateur Radio?

### Want to know about its role in Emergencies?

Two affiliated organizations, Surrey Amateur Radio Communications (SARC) in association with Surrey Emergency Program Amateur Radio (SEPAR), will not only tell you how you can be involved in the fascinating hobby of amateur radio, but will also show you how it can be of critical assistance during an emergency. The following opportunities are available to everyone:

- Attend an introduction to amateur radio for Ridge residents in May (more info after the AGM)
- Visit their Operations and Training Centre during Surrey "Doors Open" on Saturday, June 8
- Come out to witness the annual Field Day emergency simulation exercise on June 22/23
- Register for an amateur radio certification course starting in September 2019.

Watch for further details regarding all of the above on SARC's website [www.ve7sar.net](http://www.ve7sar.net) or email [sarc@ve7sar.net](mailto:sarc@ve7sar.net) to be put on a mailing list.

---

## Panorama Ridge Offers a Perfect Neighborhood to Raise Children and Horses

A young mother, then living in North Delta, searched for nine years to find a location where her young daughter could enjoy a community that encouraged horse ownership and provided sufficient space and amenities where horse riding was encouraged. In 1987 her family purchased 2.5 acres for \$150,000 and spent another \$110,000 to build a large comfortable home. They then purchased a retired race horse from the brother of former premier Bill Bennett for \$1000. They boarded this horse for 1½ years with a neighbor while personally building a barn for "Tough to Bluff". They were welcomed into the Panorama Ridge Riding Club and physically helped build the concession stand with a \$10,000 grant which also brought power to the Riding Club and Pony Club area. The couple organized and set up shows and worked as needed. Many members helped with general ring maintenance and lasting friendships were established over the years. There were many horses living on the Ridge; some lived on their owner's property and some boarding with Audrey. She has boarded about 15 horses over the years. Hay was purchased from farms on the flats below the Ridge but the owners were responsible for caring for their animals. Lifestyles have changed and most horses have now moved from the Ridge. Her last resident horses moved to Langley four years ago but they were replaced with

two Sicilian (miniature) donkeys who were a surprise gift from a daughter. A young local woman arrives early each morning to feed Nacho and Elise and generally cares for the animals. A local farrier visits every 6 weeks to trim their feet. Membership in the Riding Club is again increasing and improvements to the riding area are being made. Several large horse events are hosted annually by the Club at their Joe Brown Park facility each year but only two horses now live on the Ridge. However, there are several stables in the area where facilities and riding lessons are available for interested parties.

After raising a large family, working endlessly for the riding community and helping her husband operate a successful electrical service company, Audrey volunteered to serve on the Surrey Board of Variance for 10 years. This position reinforced her love for the community and her commitment to help preserve the semi-rural character of Panorama Ridge. She now volunteers as a director for the WPRRA where this experience with the Board of Variance is most useful and appreciated. She keeps busy as she enjoys her grandchildren, yoga, gardening, the YMCA and their vacation property on Harrison Lake but always loves returning home to her great neighborhood. Her advice to residents of the Ridge is that, despite our very busy lives, we should all make time to enjoy and appreciate our truly special community.

## Colebrook United Church

Colebrook United Church has been an integral part of this community for over 70 years. Rev. Dr. Dale Johnson will be with the Church until it disbands this October. We are a progressive Christian community faithfully journeying and trusting in the mystery that is God, seeking joy, peace and justice for all. We host 10 AM Sunday worship, a variety of activities throughout the week and also have space available for family gatherings, meetings and community activities. All are welcome in this place!

## Upcoming Events at the Church

**Strawberry Tea** - June TBA

**Ridge Day** - September 14, 2 pm to 5 pm



## Ongoing Happenings at the Church

**Pickleball** – Wednesdays from 2:00-4:00pm. \$4.00 each session. Played with a whiffle ball, tennis net and ping-pong racket. A fun indoor sport.

**Prayer Shawl Group** – Alternate Tuesdays from 10am-noon. Stitching together prayerfulness and needle work. The gifted shawls wrap the recipients in love. Come & join this fun group.

**Zumba** – Tuesdays from 7:00-8:15pm. Register for the whole session at [www.zumbavancouver.ca](http://www.zumbavancouver.ca). (\$10/class) or drop-in rate is \$13/class. Will run from April 2 – June 18, 2019.

*For more information on any of the above:*

*tel: 604-596-2412 or e-mail [info@colebrookunited.org](mailto:info@colebrookunited.org)*

*website: [colebrookunited.org](http://colebrookunited.org) and we're on Facebook.*

### Colebrook United Church also collects:

- Food for the Surrey Food Bank.
- Oak Avenue Neighbourhood Hub (HUB) items are collected for those who are in need. These items include children's clothing up to size 14 and Diapers (sizes 4-6). Colebrook also collects adult clothing, pants, shoes, tops which are given out at the Clothes Closet which operates at the HUB.

## Farewell to Colebrook United Church—serving our community since 1947

Residents of Panorama Ridge have been welcomed to Colebrook United Church on many occasions since 1947 when it was founded in association with 2 other United churches, largely due a population increase when many veterans returned home after World War 2. A local politician, J.T. Brown, worked with many others to establish the church as a separate charge in 1963. It was the first post-World War 2 building to receive heritage status from Surrey, mainly due to its architectural significance. A more modern West Coast A frame structure was built in 1959 and Memorial stained-glass windows from the old church were incorporated into the 2001 addition which upgraded and expanded the building. It is listed on the Canadian Register of Historical Places. Many families have fond memories of Sunday school picnics - travelling by train from Colebrook Station (formerly located at the foot of Station Road) to Crescent Beach. Numerous groups and activities were welcomed at the church which now includes an excellent day care facility. Colebrook United Church has served as a community meeting place for the WPRRA and we thank them for welcoming us on so many occasions. We hope the local members will continue to support their neighborhood through their active membership in the West Panorama Ridge Ratepayers Association.



**Creative Kids  
Learning Centers**

We are pleased to learn that Creative Kids Learning Center has been welcomed at Colebrook Church by the new owners to extend their lease for three more years.

This was their original location back in July of 1996 and they are grateful to be staying on Panorama Ridge.



## Thank you to our Advertisers!

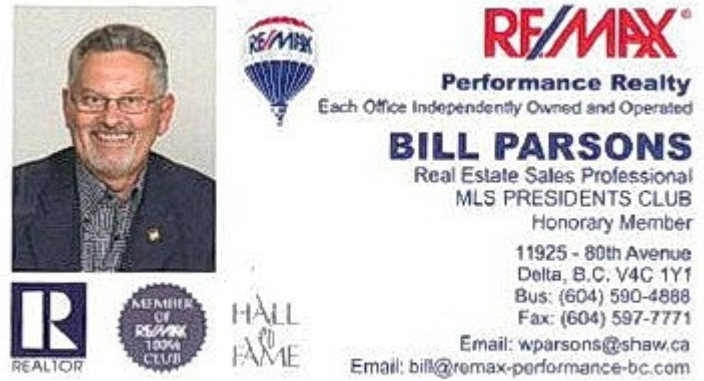
This month we are thanking you with a Freebie ad because we believe in giving back. With your support we are able to keep our community connected and updated. Please support these local businesses. Special recognition to long-time supporters; Ty & Dan Corsie, Gurjinder Bhurji, Bill Parsons, and Roger Basi. More recent supporters include Capital Tile & Stone, and Stapleton Sausage.



**TY & DAN CORSIE**  
REAL ESTATE PROFESSIONALS  
WWW.TYANDDANCORSIE.COM

TY 778.772.5754  
DAN 604.612.4972  
TYCORSIE1@GMAIL.COM

Valley Pacific Realty Ltd.



**RE/MAX**  
Performance Realty  
Each Office Independently Owned and Operated

**BILL PARSONS**  
Real Estate Sales Professional  
MLS PRESIDENTS CLUB  
Honorary Member

11925 - 80th Avenue  
Delta, B.C. V4C 1Y1  
Bus: (604) 590-4888  
Fax: (604) 597-7771  
Email: wparsons@shaw.ca  
Email: bill@remax-performance-bc.com

RE/MAX  
REALTOR  
MEMBER OF RE/MAX TOPGUN CLUB  
HALL OF FAME



**Gurjinder Bhurji**  
Sales Representative

Bus: 604.530.0231  
Cell: 604.802.6703  
Fax: 604.530.6042  
Email: gkbhurji@royallepage.ca  
Web: gurjinderbhurji.com

Royal LePage Wolstencroft Realty  
Unit #110 19925 Willowbrook Drive,  
Langley, BC V2Y 1A7

**ROYAL LEPAGE**  
Wolstencroft Realty  
INDEPENDENTLY OWNED AND OPERATED BRANCH



**CTS CAPITAL**  
TILE & STONE LTD



RE/MAX Award Winner

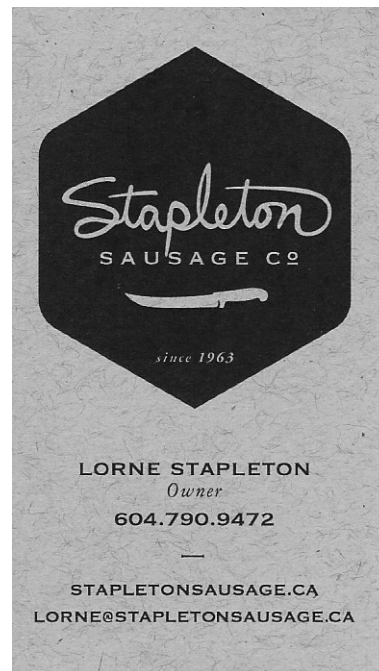
**RE/MAX**  
Performance Realty  
Independently Owned and Operated

**ROGER BASI**  
North Delta / Surrey / White Rock  
Cloverdale / Langley Homes

Cell: 604-808-3888  
E-mail: rbasi@remax.net

View testimonials on website  
www.rogerbasi.com

PLATINUM  
RE/MAX HALL OF FAME  
Certified in Feng Shui Home Staging



**Stapleton**  
SAUSAGE CO

since 1963

**LORNE STAPLETON**  
Owner  
604.790.9472

STAPLETONSAUSAGE.CA  
LORNE@STAPLETONSAUSAGE.CA

Thank you!  
Thank you!  
Thank you!  
Thank you!  
Thank you!  
Thank you!

If you are a local business interested in advertising in our newsletter please contact: [panoramaridge@shaw.ca](mailto:panoramaridge@shaw.ca)

Panorama Ridge residents are given priority.

**Mark Your Calendar! September 14, 2019**  
**10th Annual Ridge Day**



## Our Community in Pictures



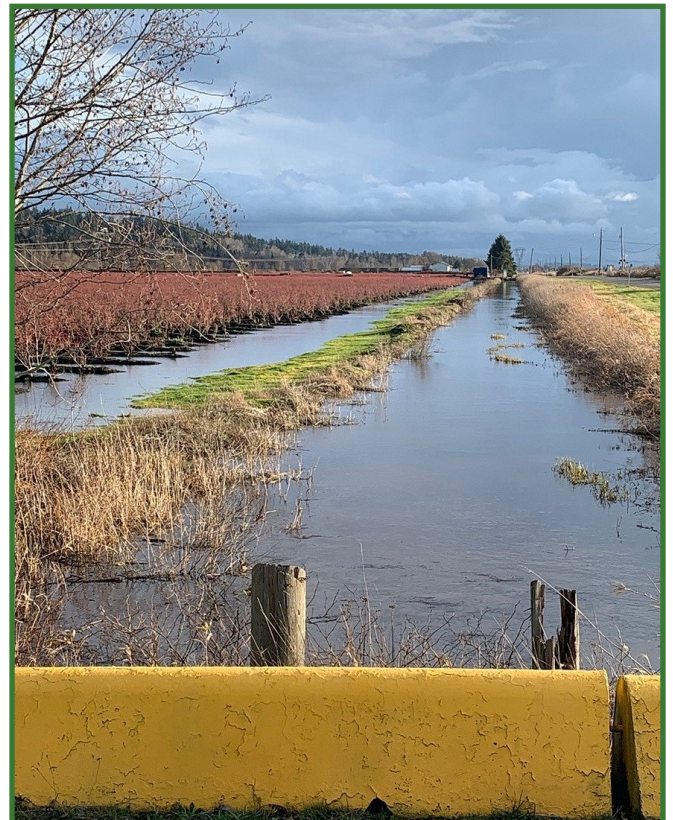
**Six more Bus Stop Bench Installations**



**Windstorm of December 2018**



**Unsightly tire marks on our roads. Report violators.**



**Flooded Ditches**



**Colebrook Train Marker**



## Presidents Message

Well, we appear to have survived a wet, windy and wild December and snowy winter but Spring is here! The White Rock pier didn't survive, but most of the properties on the Ridge appear unscathed, maybe a tree or two downed, not to mention those dreaded lengthy power outages. Gives us all a reason to think more about becoming prepared for a real emergency, so we continue to motivate the Community towards our Neighbourhood Emergency Preparedness Program ( NEPP ).

Your volunteer WPRRA board have been hard at work and we continue to work on behalf of all residents.

A few of our accomplishments and projects this fall/winter:

- 6 more bus stop benches installed
- Council meetings attended to voice concerns over the 132<sup>nd</sup>/#10 Intersection safety especially with future Commercial/Townhouse developments
- Media interviews re: above issue
- Dealing with abandoned properties as well as the dreaded "recovery homes" operating as rooms to rent and dumping of stolen goods and GARBAGE!
- With the closure of a local home, we have noticed a decrease in "traffic" and crime rates have gone down noticeably.
- Development team has been busy with meeting with the City and applicants regarding several future developments on the Ridge
- Supporting the Panorama Ridge Riding Club
- Neighbourhood safety and clean up are always front of mind...we have a great group of regular litter pickers and garbage dump reporters! This should be something we all take time to do...Earth Day participants are a great group!
- Attending and hosting monthly meetings for the WPRRA
- Addressing countless emails and inquiries...providing direction to appropriate City departments, teaching others how to advocate for themselves with our guidance.

I would also like to thank all of our regular advertisers, especially Dan and Ty Corsi and Gurjinder Bhurji who have been with us from the start! Your Spring Newsletter advertising is "on the house"!

We look forward to seeing you at a Community Event...we had a successful AGM ( April 24<sup>th</sup> ) and Earth Day ( April 27<sup>th</sup> ) and we look to celebrate Colebrook Elementary's 100<sup>th</sup> Anniversary in May ( please see Calendar/articles)

And lastly, may we all enjoy the quiet of ZERO train whistling as we all start to enjoy our patios and decks and summer slumber.

Thank you to a great little Community of active, dedicated citizens, but remember, we can all do better!

With appreciation, **Tammy Ritchie, President WPRRA**



## Membership in the WPRRA

Our community of West Panorama Ridge is bounded by Highway 10 on the north, King George Highway on the east, Highway 99 on the south and Scott Road on the west. We are proud to live in one of Surrey's most desirable residential communities.

For over 50 years the West Panorama Ridge Ratepayers Association has provided its' residents with a strong voice relative to promoting the further development of green spaces and parks within our community's boundaries. The Association directors are vigilant in ensuring that the residential development reflects the direction provided by our community.

The community website [www.panoramaridge.org](http://www.panoramaridge.org) provides residents with information about current issues and events of concern while also providing information about available essential services, event calendars, and neighbourhood news.

Our Directors work hard to fulfill the mandate of the community association. We encourage you to consider participating as a Director or Volunteer. Even if you can't spare any time, we need you to support the community association by becoming a member! Just being a member shows the City of Surrey that the residents of this community support the WPRRA. Your membership fee allows us to create and distribute the newsletter and the website. It is the best \$150 (Lifetime), \$35 (Three year membership) or \$15 (One year membership) investment you can make in your community!

✂ -----

Name: \_\_\_\_\_ Telephone: \_\_\_\_\_

Address: \_\_\_\_\_ Email: \_\_\_\_\_

**Please send to: Darryn Langstaff, WPRRA Treasurer, 5475 125A Street, Surrey, BC V3X 1W4**

Receipts will be sent to the address listed above. All membership information is confidential and not shared.

**To contact WPRRA by email: [panoramaridge@shaw.ca](mailto:panoramaridge@shaw.ca)**



Consider downloading the **Surrey Request App** on your cell phone or tablet device.

You can report litter, graffiti, potholes and much more. You are able to send a photo of your issue, show location easily on a map marker, select your issue (no typing required), and track your request and status.

**It's that time of year**

### **Flooding & Prevention Tips**

**Clear your gutters and drains**

**More info at the City of Surrey website**

**<https://www.surrey.ca/city-services/6157.aspx>**

Item and Website Link	Telephone
<b>City of Surrey (general line)</b> <a href="http://www.surrey.ca">www.surrey.ca</a>	604-591-4011
<b>Emergency issues (broken water mains, missing stops signs, street or sidewalk repair)</b> <a href="http://www.surrey.ca/city-services/667.aspx">http://www.surrey.ca/city-services/667.aspx</a>	604-591-4152
<b>Bylaw &amp; Animal Complaints</b>	604-591-4370
<b>Parking Complaints</b>	604-591-4352
<b>Waste Collection Hotline</b>	604-590-7289
<b>Non-Emergency Fire:</b> (burning regulations, abandoned building, suspected grow-up, general issues) <a href="http://www.surrey.ca/city-services/4696.aspx">http://www.surrey.ca/city-services/4696.aspx</a>	604-543-6700
<b>Blockwatch program</b>	604-502-6560
<b>Crimestoppers</b>	1-800-222-8477 (TIPS)
<b>Non-Emergency RCMP</b>	604-599-0502

**[www.PanoramaRidge.org](http://www.PanoramaRidge.org)**